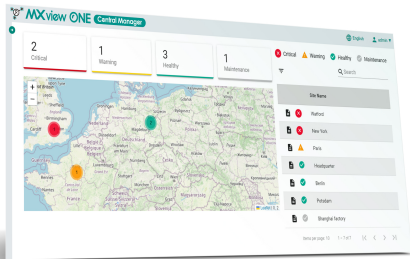


# MXview One Central Manager Series **INFO**

Centralized platform for managing and monitoring local MXview One sites

## Features and Benefits

- Centralized management of local sites, groups, accounts, and licenses
- Site registration mechanism for improved security
- Intuitive dashboard to easily monitor the status of sites
- Remote access to MXview One local sites for troubleshooting
- Customizable event severity and notifications
- User-defined schedules to automatically generate reports
- Flexible license management to allocate node, site, and add-on licenses



## Introduction

MXview One Central Manager is a centralized platform designed for managing and monitoring MXview One local sites. MXview One Central Manager works in tandem with MXview One, allowing you to centrally manage all your sites and their licenses through MXview One Central Manager, or choose to manage MXview One sites locally at any time. When registered with Central Manager, you can easily monitor the real-time status of your sites from the intuitive dashboard. When critical or warning events occur at any local site, instant notifications keep you on top of any issues and help you minimize downtime.

With MXview One Central Manager, you can more efficiently manage multiple sites as groups, each with its own customized configuration, user accounts, and access privileges. When the scale of your MXview One site network grows, you can easily expand the management scope of MXview One Central Manager by adding additional sites and nodes on demand, depending on your needs. Furthermore, the flexible license management lets you efficiently allocate and manage the licenses of all registered MXview One sites.

## Visualization

- Intuitive dashboard showing the live status of each site and events
- Interactive map to quickly identify the physical location of sites

## Site Monitoring and Event Notifications

- Monitor multiple MXview One sites at a glance in real time
- Remotely access MXview One local sites at any time for direct management and troubleshooting
- Customizable event severity and notifications for network and system events
- Configurable event alarm notifications by email

## Group Management

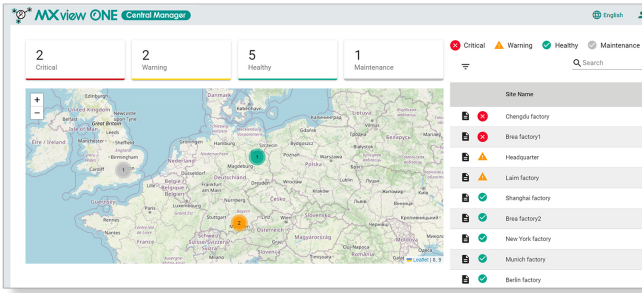
- Easily manage large numbers of sites in groups depending on the scale and structure of your network
- User-configured accounts with specific privileges to manage or monitor groups

## Comprehensive Reports

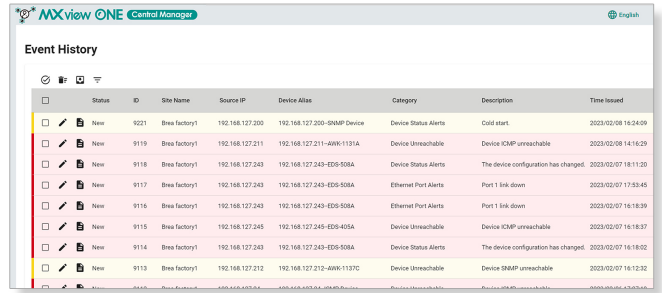
- Compile comprehensive site- and group-level reports for review and troubleshooting
- Automatically generated periodical reports based on user-defined schedules

## Flexible Licenses

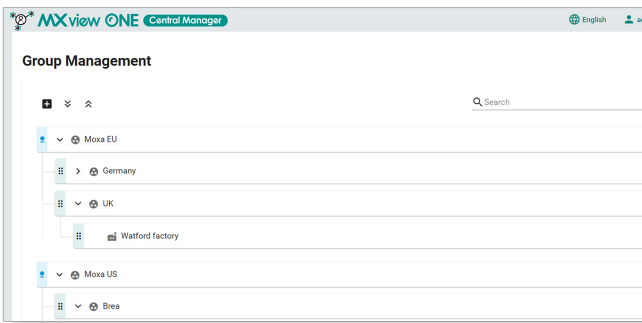
- Increase the node and site count of MXview One Central Manager on demand to meet growing network requirements
- Allocate licenses to root groups and sites for more efficient license management
- Easily keep track of used and available licenses



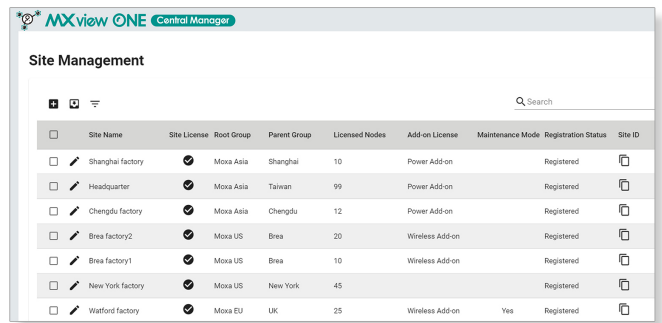
**Dashboard and Map View**



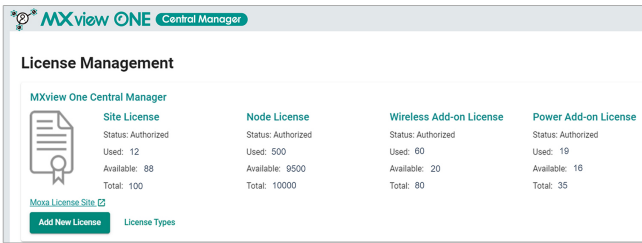
**Event History**



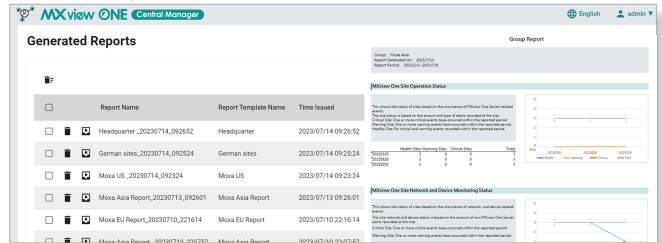
**Group Management**



**Site Management**



**License Management**



**Reports**

**Specifications**

**Hardware Requirements**

vCore	4
CPU	Quad-core CPU
RAM	8 GB or higher
Hardware Disk Space	1 TB SSD or higher
Supported Hypervisors	VM Workstation 14 or above

## Software Requirements

Browser	Chrome: Version 76 or above Firefox: Version 69 or above Microsoft Edge: Version 79 or above
---------	--

## Package Contents

Number of Supported Sites	Up to 100
---------------------------	-----------

## Ordering Information

Model Name	No. of Supported Sites	Add-on Service
LIC-MXviewOneCM-NEW-XS-SR	Customizable (Can be used to expand site count)	-
LIC-MXviewOneCM-ADD-POWER-XS-SR	-	MXview Power
LIC-MXviewOneCM-ADD-WIRELESS-XS-SR	-	MXview Wireless

© Moxa Inc. All rights reserved. Updated Jul 27, 2023.

This document and any portion thereof may not be reproduced or used in any manner whatsoever without the express written permission of Moxa Inc. Product specifications subject to change without notice. Visit our website for the most up-to-date product information.